



# Series 2000 M

## Pneumatic expanding shafts

### The new generation in air expanding shafts - Series 2000 M

The modern design offers a light shaft weight with excellent balance and torque characteristics.

The external elements, available in rubber or aluminium and the durable poly bladder are easy to change.

Rigid construction and innovative design with affordable price, low weight and low component count.

Series 2000 M is ideal for light and medium duty applications.

Suitable for core inner diameter 70mm, 76,2mm (3"), 150mm and 152,4mm (6").



FEATURES

## SPECS

### Technical Specifications

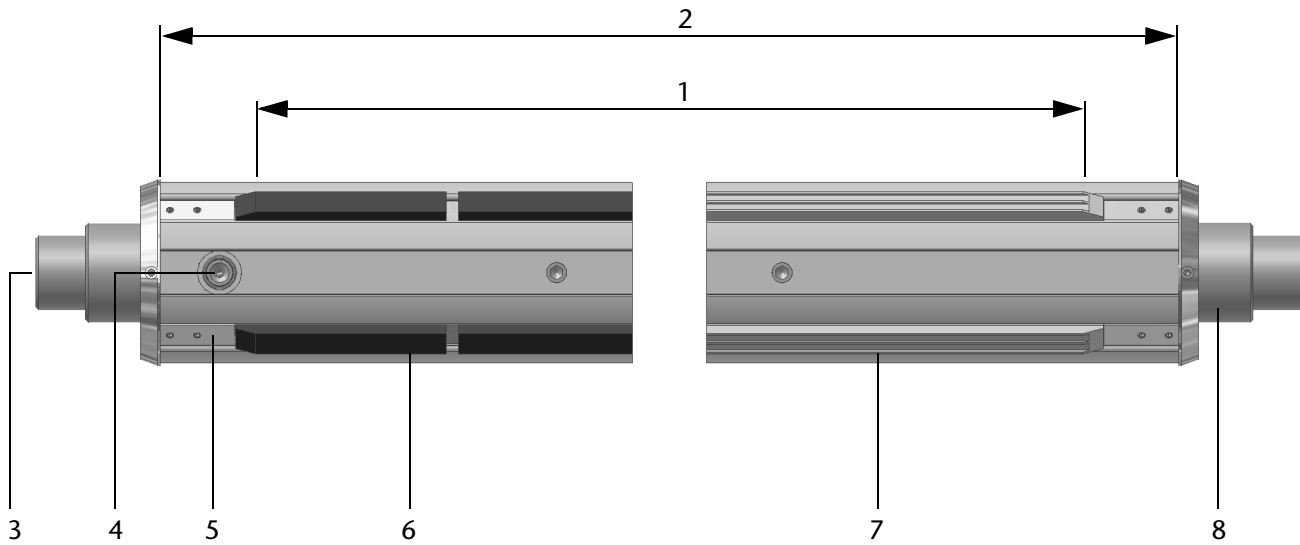
**Approximate Torque Capacities for Series 2000 M**  
for each 25mm web width, cores according to DIN13542.  
with air pressure of 6bars.

Core inner diameter	Fiber Core [in*lbs]	Fiber Core [Nm]	Steel Core [in*lbs]	Steel Core [Nm]
70mm (2,75")	107,0	12,1	113,3	12,8
76,2mm (3")	141,6	16,0	149,5	16,9
150mm	400,1	45,3	424,8	48,0
152,4mm (6")	338,0	38,2	357,5	40,4

### Key Features

- Advanced strip design delivers ideal combination of balance and torque.
- Two-piece expanding elements can be changed easily, without even removing the shaft from the machine.
- Journal detail can be customized to fit existing equipment.
- Faster, easier shaft handling maximizes productivity.
- Durable construction designed to withstand abuse and abrasion.

## Components of Series 2000 M

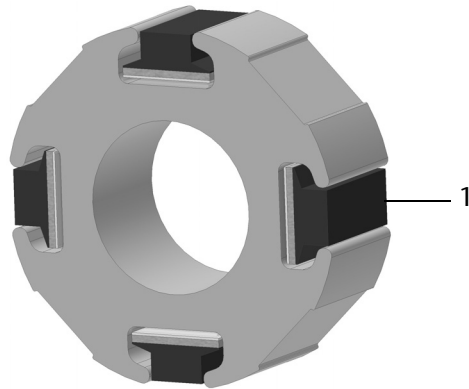


- 1 Expansion length
- 2 Main body
- 3 Standard end valve
- 4 Side valve (optional)

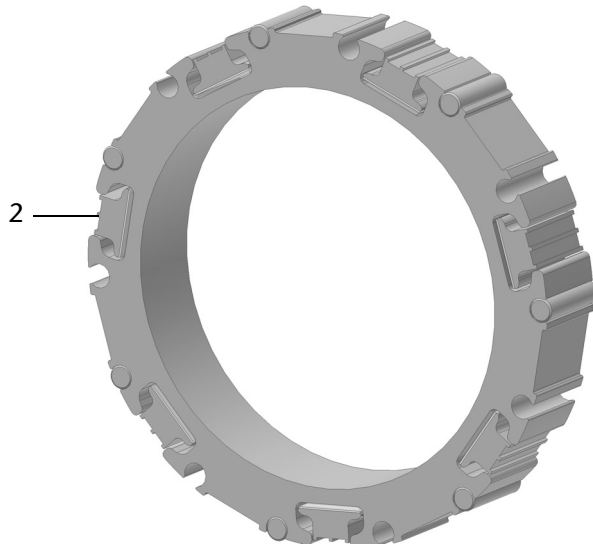
- 5 End clamp
- 6 Expansion element - rubber
- 7 Expansion element - aluminium
- 8 Journal

## Design Features of Series 2000 M

For Core Inner Diameter of  
70mm and 76,2mm (3")



For Core Inner Diameter of  
150mm and 152,4mm (6")



- 1 - Rubber
- 2 - Aluminium

### Fife-Tidland GmbH

Fifestraße 1, 65779 Kelkheim, Deutschland  
Siemensstraße 13-15, 48683 Ahaus, Deutschland  
Phone: +49-6195-7002-0  
Fax: +49-6195-7002-933  
E-Mail: [info@maxcess.eu](mailto:info@maxcess.eu)  
Web: [www.maxcess.eu](http://www.maxcess.eu)

### Fife-Tidland Ltd.

Millennium House - Progress Way  
Denton/Manchester M34 2GP Great Britain  
Phone: +44-161-320-2000  
Fax: +44-161-320-4513  
E-Mail: [sales\\_uk@maxcess.eu](mailto:sales_uk@maxcess.eu)  
Web: [www.maxcess.eu](http://www.maxcess.eu)

### Tidland Corporation

2305 SE 8th Avenue  
Camas, WA 98607 USA  
Phone: +1-360-834-2345  
Fax: +1-360-834-5865  
E-Mail: [tidland@tidland.com](mailto:tidland@tidland.com)  
<http://www.tidland.com>



MAXCESS INTERNATIONAL COMPANIES



GUIDING · INSPECTION



TENSION CONTROL



SLITTING · WINDING